

# Šifruojame sauso maisto sudėtį

Interaktyvi diskusija

UAB „PetCuris“

Rimas Kareiva

+370 698 52600

info@petcuris.lt

www.petcuris.lt



**PETCURIS**<sup>LT</sup>  
NATŪRALI GYVŪNŲ PRIEŽIŪRA

# Tikslas

- Kaip pasirinkti?
- Nuo ko pradėti?
- Kaip neapsigauti?
- Kaip suprasti?
- Kas yra svarbu, o kas ne?



# Pradžia – tikslo suvokimas

Kriterijai:

- Amžius;
- Veislēs specifika;
- Sveikatos būsena;
- Nēštumas;
- Asmeninīai šuns bruožai (jautrumas, alergija);
- Finansīnēs galīmybēs.



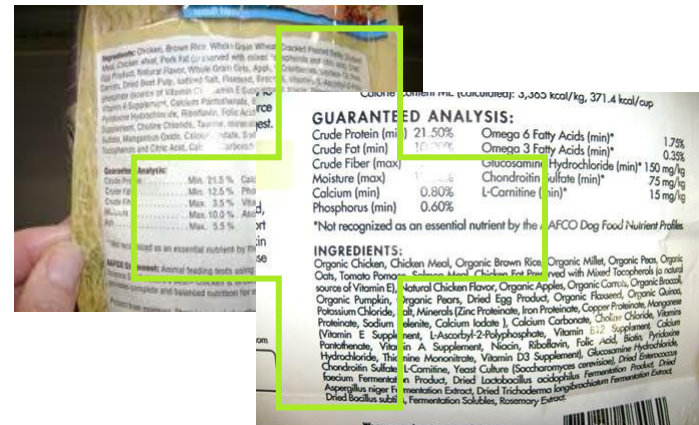
# Pradžia – klaidos

Pagrindinės klaidos:

- Naudotis VBS principu;
- „Koks maistas geriausias?“
- Veisėjas geriausiai žino
- Noriai ėda – geras maistas
- Aukšta kaina = aukšta kokybė



# Pradžia – klaidos



# Kaip pasirinkti?

Pagrindai:

- Ingridientai pateikiami iš eilės kiekio mažėjimo tvarka;
- Dažniausiai pirmi 5 ingredientai sudaro didžiąją maisto masės dalį;
- Tiesa dažnai „pasimeta“:
  - Sudėties gausume
  - Ingridientų būsenose
  - Sudėties vertimuose

## Ingredients

Deboned Chicken, Chicken Meal, Whole Ground Brown Rice, Whole Ground Barley, Oatmeal, Rye, Whole Potatoes, Tomato Pomace (natural source of Lycopene), Chicken Fat (preserved with Natural Mixed Tocopherols), Natural Chicken Flavor, Whole Carrots, Whole Sweet Potatoes, Blueberries, Cranberries, Flaxseed, Barley Grass, Dried Parsley, Alfalfa Meal, Kelp Meal, Taurine, L-Carnitine, L-Lysine, Glucosamine Hydrochloride, Yucca Schidigera Extract, Green Tea Extract, Turmeric, Garlic, Sunflower Oil (natural source of Omega 6 Fatty Acids), Herring Oil (natural source of Omega 3 Fatty Acids), Fructooligosaccharides, Monooligosaccharides, Dried Chicory Root, Black Malted Barley, Oil of Rosemary, Vitamin A Supplement, Vitamin C, Vitamin E Supplement, Vitamin D3 Supplement, Beta Carotene, Calcium Ascorbate (source of Vitamin C), Vitamin B12 Supplement, Niacin (Vitamin B3), Calcium Pantothenate (Vitamin B5), Riboflavin (Vitamin B2), Pyridoxine Hydrochloride (Vitamin B6), Thiamine Hydrochloride (Vitamin B1), Folic Acid, Biotin, Choline Chloride, Calcium Phosphate, Zinc Amino Acid Complex (source of Chelated Zinc), Iron Amino Acid Complex (source of Chelated Iron), Copper Amino Acid Complex (source of Chelated Copper), Manganese Amino Acid Complex (source of Chelated Manganese), Potassium Amino Acid Complex (source of Chelated Potassium), Cobalt Proteinates (source of Chelated Cobalt), Potassium Chloride, Sodium Selenite, Salt, Lactobacillus acidophilus, Bacillus subtilis, Bifidobacterium thermophilum, Bifidobacterium longum, Enterococcus faecium.



# Kaip pasirinkti?

## Angliška sudėtis:

*Chicken meal, corn, wheat, animal fat, animal protein concentrates, rice, hydrolysed chicken protein, beet pulp, whole dried egg, yeast, F.O.S., yucca.*

## Lietuviška sudėtis:

*Komponentai: mėsa ir mėsos gaminiai (30% vištienos, vištienos baltymų hidrolizės produktai), ryžiai, augaliniai produktai (burokų pulpa, kviečiai, kukurūzai), augaliniai aliejai ir riebalai, kiaušiniai, kiaušinių produktai, žuvis ir žuvies produktai, mineralai ir vitaminai, alaus mielės, lecitinas, FOS, Yucca Schidigera. Sudėtyje nėra dirbtinių dažiklių, kvapiųjų medžiagų ar konservantų.*

# Kaip pasirinkti?

Pagrindai:

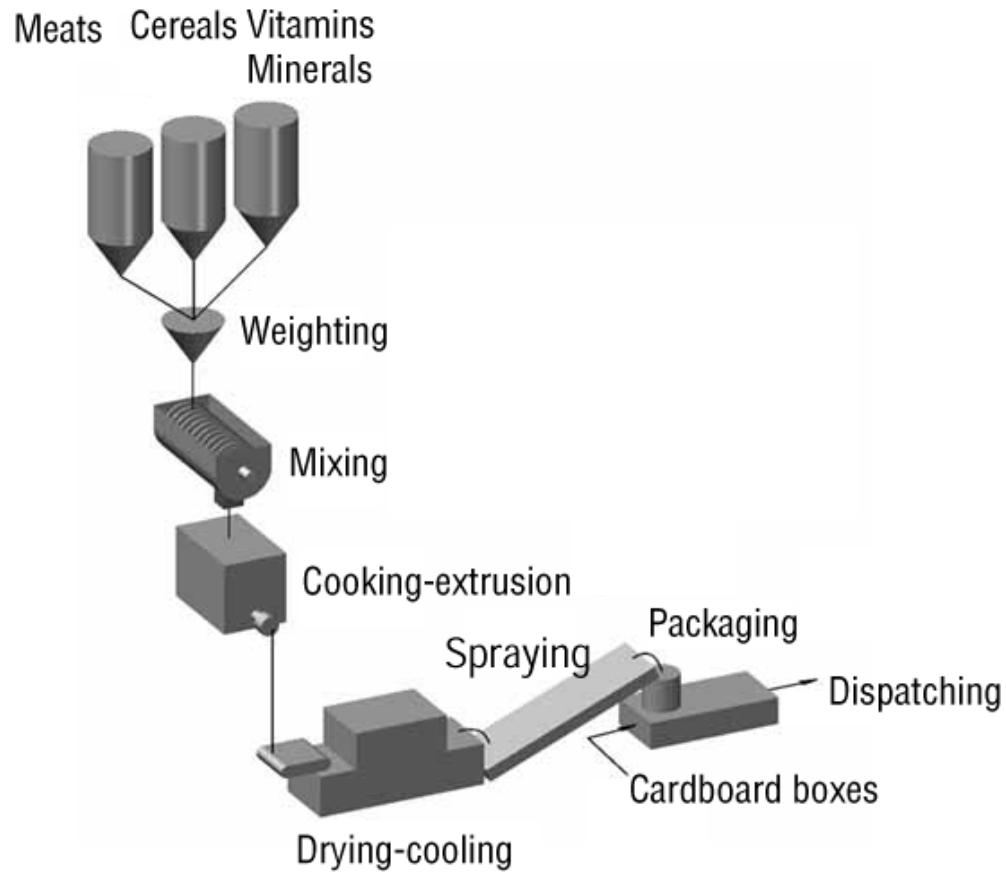
- Ingridientai pateikiami iš eilės kiekio mažėjimo tvarka;
- Dažniausiai pirmi 5 ingredientai sudaro didžiąją maisto masės dalį;
- Tiesa dažnai „pasimeta“:
  - Sudėties gausume
  - Ingridientų būsenose
  - Sudėties vertimuose
- Alergija ingredientams

## Ingredients

Deboned Chicken, Chicken Meal, Whole Ground Brown Rice, Whole Ground Barley, Oatmeal, Rye, Whole Potatoes, Tomato Pomace (natural source of Lycopene), Chicken Fat (preserved with Natural Mixed Tocopherols), Natural Chicken Flavor, Whole Carrots, Whole Sweet Potatoes, Blueberries, Cranberries, Flaxseed, Barley Grass, Dried Parsley, Alfalfa Meal, Kelp Meal, Taurine, L-Carnitine, L-Lysine, Glucosamine Hydrochloride, Yucca Schidigera Extract, Green Tea Extract, Turmeric, Garlic, Sunflower Oil (natural source of Omega 6 Fatty Acids), Herring Oil (natural source of Omega 3 Fatty Acids), Fructooligosaccharides, Monooligosaccharides, Dried Chicory Root, Black Malted Barley, Oil of Rosemary, Vitamin A Supplement, Vitamin C, Vitamin E Supplement, Vitamin D3 Supplement, Beta Carotene, Calcium Ascorbate (source of Vitamin C), Vitamin B12 Supplement, Niacin (Vitamin B3), Calcium Pantothenate (Vitamin B5), Riboflavin (Vitamin B2), Pyridoxine Hydrochloride (Vitamin B6), Thiamine Hydrochloride (Vitamin B1), Folic Acid, Biotin, Choline Chloride, Calcium Phosphate, Zinc Amino Acid Complex (source of Chelated Zinc), Iron Amino Acid Complex (source of Chelated Iron), Copper Amino Acid Complex (source of Chelated Copper), Manganese Amino Acid Complex (source of Chelated Manganese), Potassium Amino Acid Complex (source of Chelated Potassium), Cobalt Proteinates (source of Chelated Cobalt), Potassium Chloride, Sodium Selenite, Salt, Lactobacillus acidophilus, Bacillus subtilis, Bifidobacterium thermophilum, Bifidobacterium longum, Enterococcus faecium.



# Kaip pasirinkti?

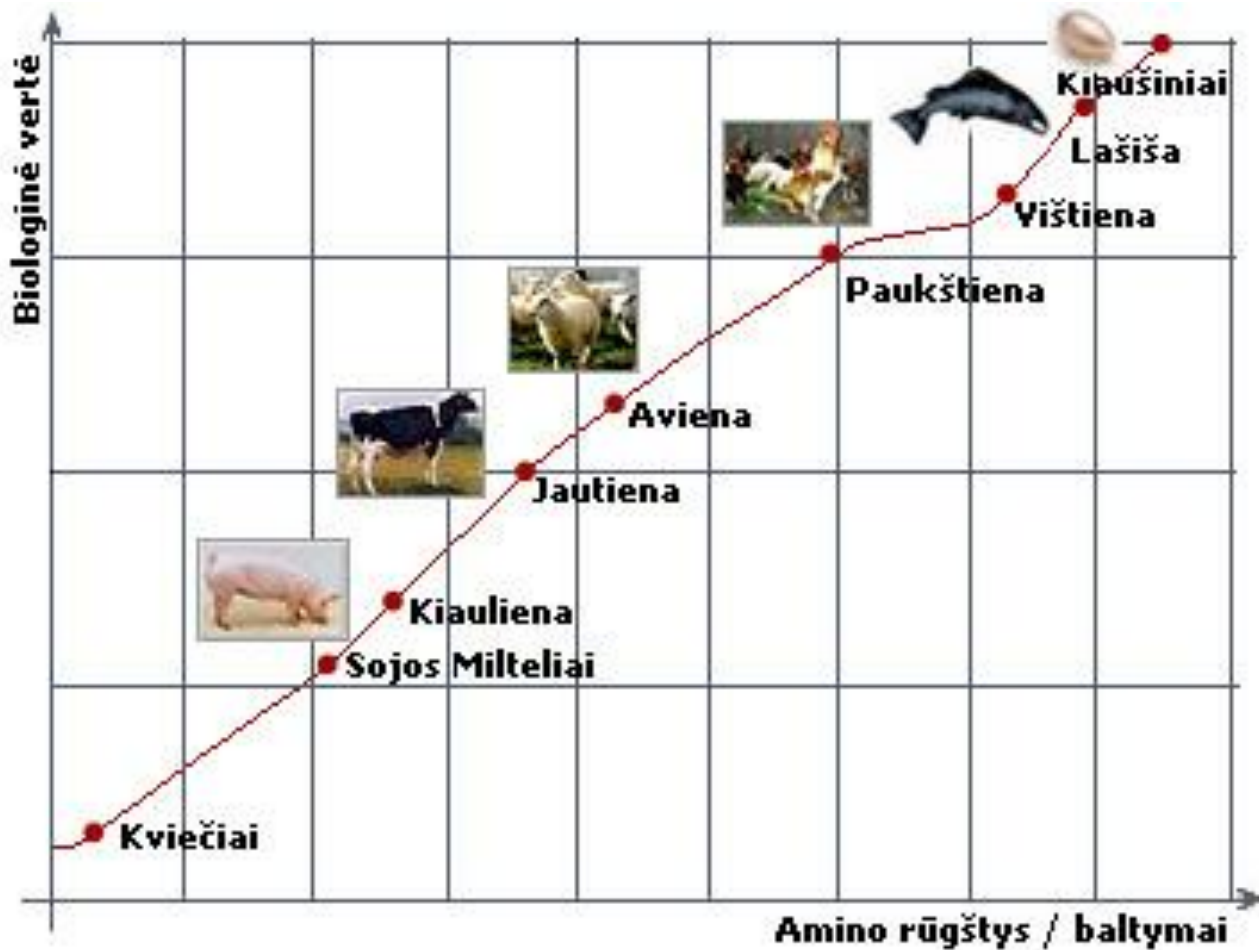


# Kaip pasirinkti?

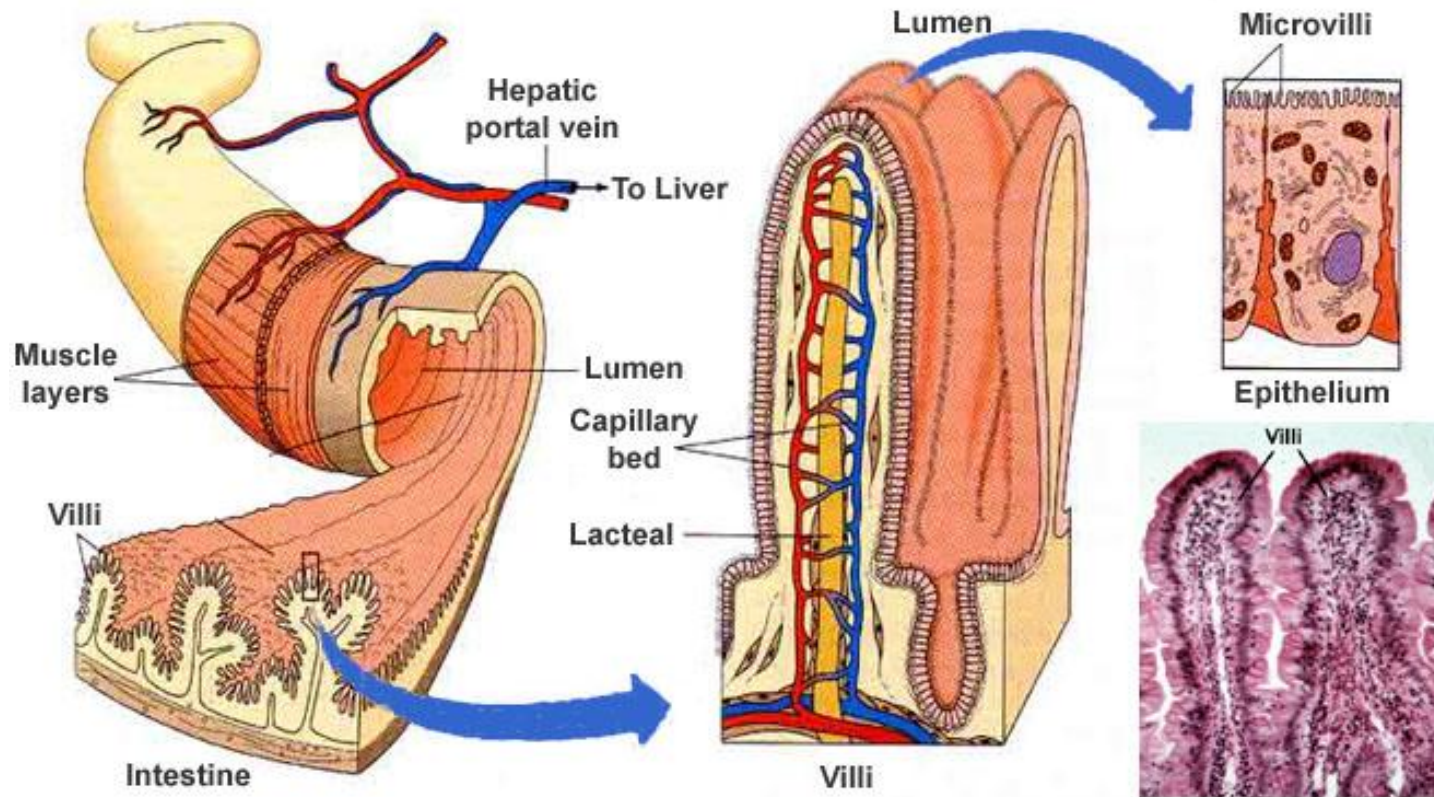
Pagrindai:

- Maistinė vertė: baltymai, riebalai, angliavandeniai, mineralai, vitaminai;
- Maistinę vertę skaičiuojame 100 proc. sausai konsistencijai (išminusuojama drėgmė);
- Vištienos subproduktai nėra vištiena;
- „Baltymas nelygu baltymui“;

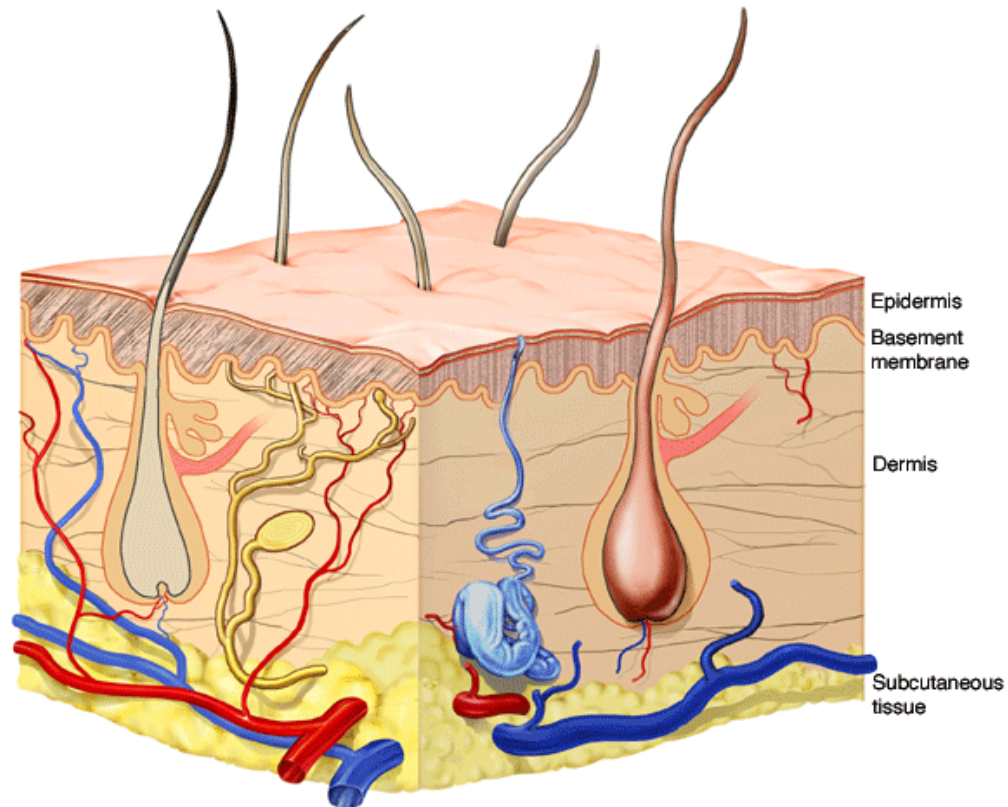
# Kaip pasirinkti?



# Grūdai, grūdai, grūdai...

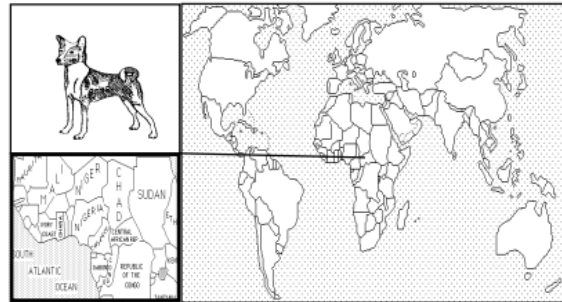


# Grūdaini, grūdaini, grūdaini...



# Kaip pasirinkti?

## BASENJI



**Weight Standards:** m - 25 lbs., f - 23 lbs.

**Height Standards:** m - 17 inches, f - 16 inches

**Coat:** short, silky smooth, single in tan, black or red with white

**Common Ailments:** congenital hemolytic anemia, hyperactive

The Basenji developed in Central Africa as a sight hunter. It is not a mute dog, yet it is known as the "barkless dog." The sound that the Basenji makes is somewhere between a chortle and a yodel. In their native Africa they hunt small game by pointing, holding, and then upon command, driving the game into a net after the hunter is in position. They are also used as retrievers for the game that takes flight.

Native food supplies for this breed would have been the African desert partridge and rabbit combined with a local form of the grains wheat and rice. Another staple of their diet would have been a tuber root that is very similar to the peanut.

For the Basenji I recommend commercial foods that contain their protein from beef and horse meats blended with poultry. The carbohydrate sources should be from brown rice and wheat. However, you should



# Kaip pasirinkti?

Pagrindai:

- Normuojame kalorijomis, bet ne gramais;
- Nuolatinis svėrimas;
- Maisto kaina per kaloriją;

**Dog Food Calculator**

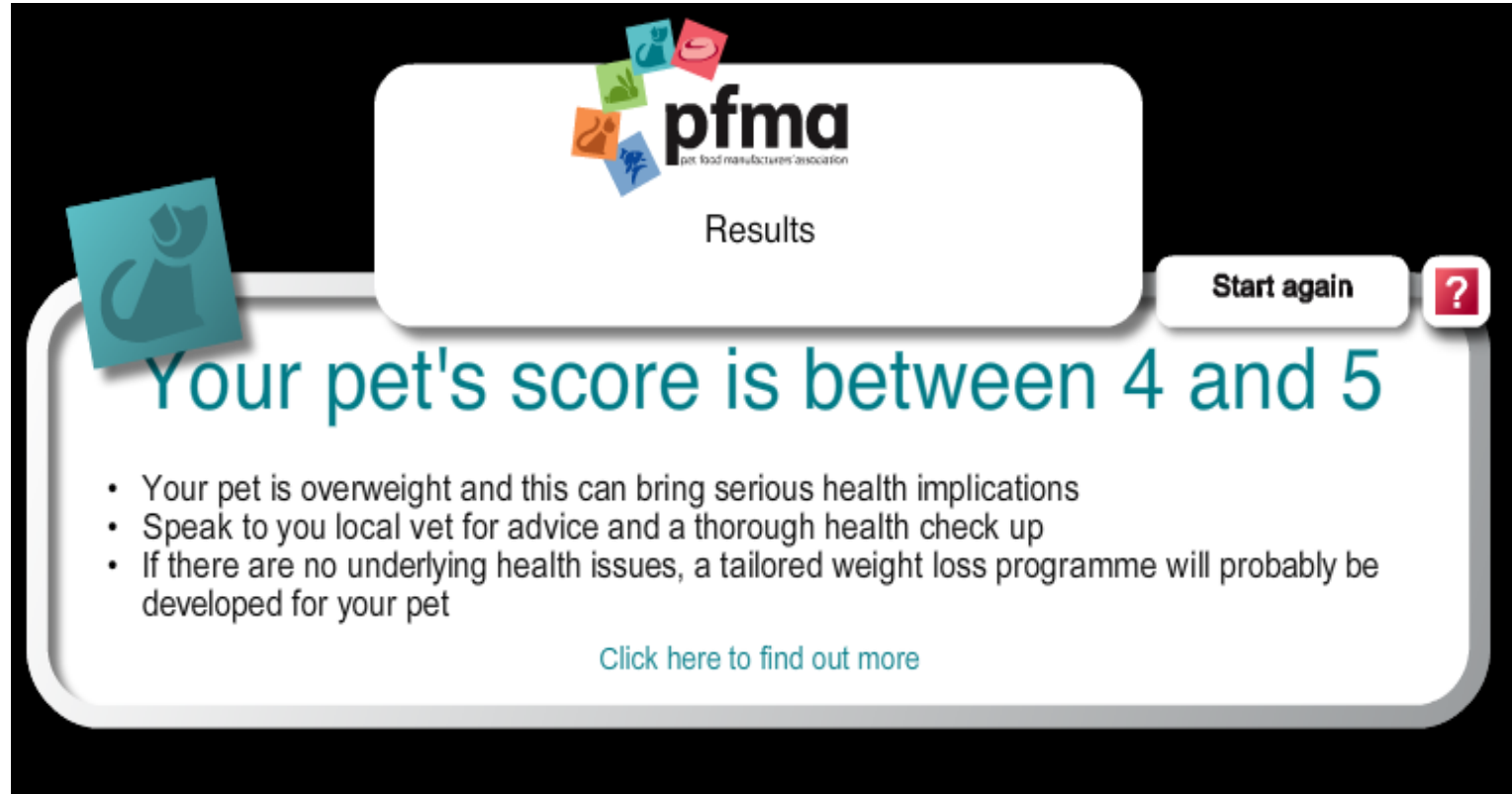
✓ **Step 1**  
Enter your dog's ideal weight  
16  pounds  kilograms

✓ **Step 2**  
Describe your dog's activity level  
Active   
**Your dog requires 1000 calories/day**

✓ **Step 3**  
Enter your dog food's calories/serving  
3458  calories/cup  calories/kg  
**Feed your dog 0.29 kg/day**

<http://www.dogfoodadvisor.com/dog-feeding-tips/dog-food-calculator/>

# Kaip pasirinkti?



**pfma**  
pet food manufacturers' association

Results

**Start again** ?

## Your pet's score is between 4 and 5

- Your pet is overweight and this can bring serious health implications
- Speak to you local vet for advice and a thorough health check up
- If there are no underlying health issues, a tailored weight loss programme will probably be developed for your pet

[Click here to find out more](#)

<http://www.pfma.org.uk/petometer.html>